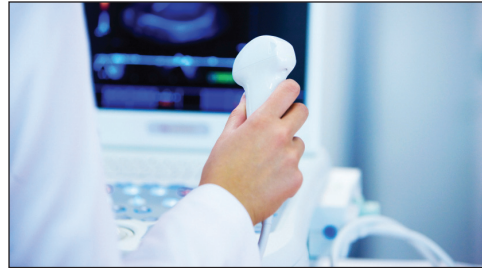


# South Jersey Healthcare



S U C C E S S  
S T O R Y

## South Jersey Healthcare selects Nautilus/Epson for reliable imaging and disc publishing solution.

*“The Nautilus/Epson solution is more user friendly, faster and more reliable than our previous system and we are very pleased with it.”*

Mary T. Fanning-Chalako  
R.T. (R)(M), PACS Administrator  
South Jersey Healthcare



*Epson's Discproducer disc publisher is built with Epson's world-renowned robotics and printing technologies.*

*Award-winning South Jersey Healthcare (SJH) is one of region's leading providers of medical and healthcare services. The nonprofit organization's hospital facilities include the SJH Elmer Hospital and the SJH Regional Medical Center, with specialty cancer and diagnostic centers. SJH also offers outpatient care for radiology, lab and physical therapy services, home care and hospice services, and community-based health clinics.*

### **Current image management system needed updating**

South Jersey Healthcare offers the largest network of radiology services in the region and has performed over 230,000 radiological imaging procedures in a year including X-rays, MRI scans, CT scans, ultrasounds and other imaging services. With this high volume, SJH decided they needed a more cost-effective, reliable and easy-to-use digital imaging system to make patient images available to hospitals, doctors and patients in a timely manner.

### **Nautilus and Epson have solution**

For the answer, SJH turned to Nautilus Medical, a leading provider of medical recording solutions in the radiology imaging market. On their recommendation, SJH installed Nautilus Medical's AutoRay with Epson's Discproducer disc publisher in all its radiology centers throughout SJH hospitals,

health centers and regional offices. AutoRay, a CD/DVD production system, acquires images from a DICOM (Digital Imaging and Communications in Medicine) scanner to display images on screen and then burns and prints personalized CDs/DVDs using Epson's Discproducer.

### **Complete end-to-end solution**

Each AutoRay system includes a simple graphical user interface, powerful personal computer, DICOM importer with graphic converter and an Epson Discproducer that can personalize each disc with the patient's name, ID hospital's name, date, time or other important data.

### **New system is easy and cost-effective**

“The new Nautilus / Epson solution is more user friendly, faster and more reliable than our previous system,” said Mary T. Fanning-Chalako R.T. (R)(M), PACS Administrator at SJH. “The result is a complete and portable medical record that costs less to produce than those of comparable disc publishers. The solution helps expedite decisions that affect patient safety, as well as allows patients to take ownership of their own medical history. And improved access to medical imaging data can lead to faster diagnosis and treatment, which saves lives,” said Fanning.

### Epson's Discproducer delivers

Epson's Discproducer has all the features SJH's staff needs to print and burn customized CDs or DVDs. It easily fits on a desk and produces up to 100 discs without reloading. Epson's advanced AcuGrip™ robotics arm eliminates two-disc feeding that can damage discs and interrupt short jobs. It also prints discs with crisp, clear text and high-quality graphics at up to 1400 x 1440 dpi resolution. The discs also include an integrated viewer so patients and physicians can analyze the data from anywhere.

#### HIGHLIGHTS

- Nautilus' AutoRay collects images, displays them and transfers them to Discproducer.
- Epson's Discproducer allows medical centers to burn and print up to 100 discs on demand.
- With Nautilus/Epson imaging solution, physicians can collect, view and share diagnostic information.

### Nautilus Medical known for service

An Epson Envision Partner, Nautilus is one of the fastest growing companies in the radiology marketplace. "I've worked with the people at Nautilus Medical for the past six years with a number of installations and equipment," said Fanning at South Jersey Healthcare. "I wish all companies were as diligent with their follow up and overall concern for how we integrate our new products as Nautilus."

### A successful partnership

"The AutoRay and Discproducer imaging solution is the result of a successful partnership between Nautilus and Epson," said Tim Kelley, President of Chicago-based Nautilus Medical Imaging Solution, a leading software developer and system integrator of DICOM distribution systems. "We saw the Epson Discproducer as a good fit for our AutoRay DICOM system because we knew it would meet the reliability standards of customers like South Jersey Healthcare."

### Partner with the leader

With its advanced printing and imaging technology, Epson leads the way in providing proven solutions for the healthcare industry that reduce operating costs, simplify training and improve the patient experience.

#### EPSON SOLUTION PARTNER

##### Hardware and Software:

Epson Discproducer Disc Publisher  
Nautilus Medical AutoRay System



*The Nautilus/Epson medical imaging and publishing system is a reliable and cost-effective solution for South Jersey Healthcare.*